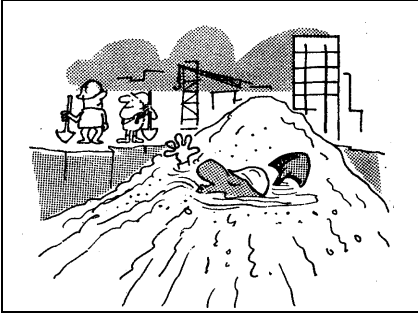
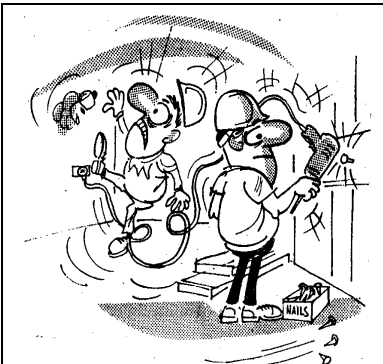


CS1 CONSTRUCTION SITE SAFETY 1



EXCAVATIONS

Excavations of all types require barricading and hand railing of substantial materials so as to prevent persons from falling into them. Excavations or trenches exceeding 1.5 metres should have shoring to walls and faces or as stipulated by regulations. Ladder access must be provided to and from ALL excavations and trenches.

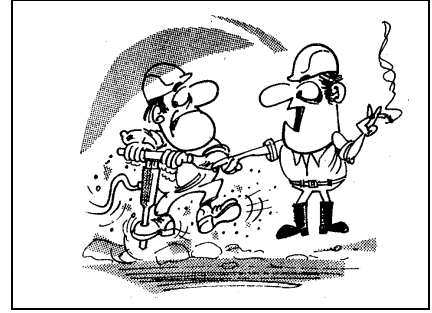


POWER TOOLS

Power saws, grinders and other power tools must have proper guards in place at all times and be protected at all times by an ELCB unit. Cords and hoses must be placed so as not to create a tripping hazard, or be subjected to damage from equipment or materials.

They must also be:

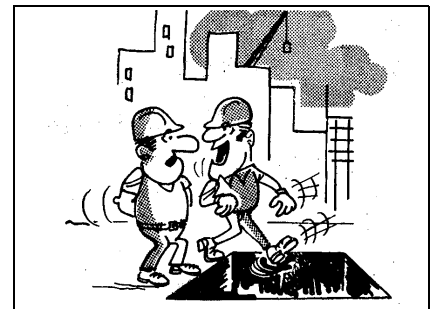
- Repaired by licensed electrician only
- Tested as per the relevant regulations



COMPRESSED AIR

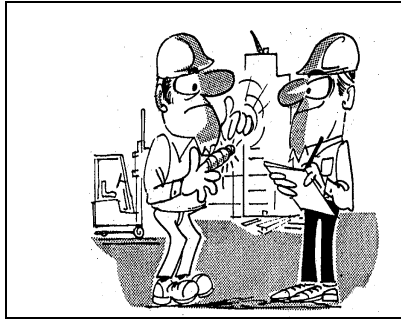
Many site operations, tools and equipment use compressed air for power or cleaning down. Compressed air can also injure or kill. It can blast slivers of wood, steel and concrete into eyes, through skin, and deep into flesh. It can peel skin off in a second. It can burst lungs. It can even enter the blood stream and stop a heart for good. IT DESERVES TO BE TREATED WITH RESPECT.

Check airlines and tools before use, fasten all hose connections securely. DO NOT use compressed air to blow dust from clothing or skin, death may result.



GUARD RAILS

All openings in the ground and all penetrations in floors MUST be fitted with guard rails or handrails. If you see any missing or damaged report it promptly. Any barrier removed to carry out work MUST be replaced before leaving the area.

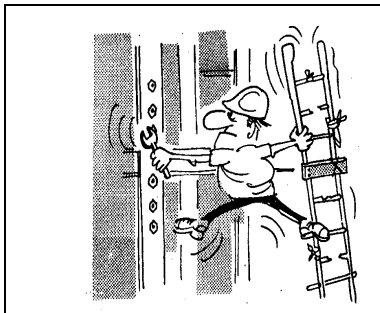


ACCIDENT REPORTING

All accidents need to be reported so that they may be investigated and analysed. It is also a legal requirement in some cases.

If there is an accident, please make sure it is reported, no matter how small it is.

Remember it's in everybody's interest to know!



LADDERS

Before using any ladder it must be inspected for damage. Wooden ladders are not to be painted. **Damaged ladders are not to be used under any circumstances.**

Ladders are to be soundly constructed, long enough for the job and secured at the top and/or

bottom. Set the ladder at the correct angle of 1 in 4 before climbing. Tools should not be carried in your hands when climbing up or down. Never use a metal ladder adjacent to suspended electrical conductors unless they have been isolated.

Clean mud and grease off footwear before using ladders. Face the ladder when climbing and use both hands to hang on. Make sure the ladder is long enough to do the job and protrudes at least one metre above the work platform or landing platform.



INJURY REPORTING

All injuries must be reported to the first-aid attendant/foreman for treatment and recording.

The first-aid attendant will carry out treatment initially and recommend follow-up treatment, whether it be a return to the first-aid room at a later time or a referral to a doctor.

To assist in a workers compensation claim it is essential to have any injury recorded at the time of happening. Certain injuries are also required to be notified to WorkCover.



CHEMICALS and FIBRE-BASED PRODUCTS

All chemicals and fibre-based substances introduced to site must not be used unless accompanied by a Materials Safety Data Sheet

(MSDS). The responsible foreman will ensure that the use of these products will not be harmful to those workers handling them, and that the correct procedures for use and the type of protective equipment (if necessary) should be worn.

If it is not possible to safely use any substance or there is a doubt about MSDS information, then the substance or product must not be used until the correct information is available, or an alternative can be found.

For further information contact:

Workplace Services

Department for Administrative & Information Services

GPO Box 465 ADELAIDE SA 5001

Level 3, 1 Richmond Road, KESWICK SA

Ph: 1300 365 255 (If calling from a mobile phone or from interstate ph: (08) 8303 0400)

Website: www.eric.sa.gov.au

Issue Date: March 2000